



The Welfare  
Y Neuadd Les

Ystradgynlais

SEPT 2019 – JAN 2020  
MEDI - ION 2019



☎ 01639 843163

🌐 [www.thewelfare.co.uk](http://www.thewelfare.co.uk)

✉ [boxoffice@thewelfare.co.uk](mailto:boxoffice@thewelfare.co.uk)

Follow us on / Dilynwch ni ar

📘 [welfare.ystradgynlais](https://www.facebook.com/welfare.ystradgynlais)

🐦 @TheWelfare1

# Welcome / Croeso

**Hello and welcome to another exciting season of live entertainment, cinema and community arts at The Welfare.**

Along with our popular range of live theatre, ballet and opera broadcasts, we are also adding comedy to our bill this season, with **Sir Billy Connolly's** final stand-up tour being shown on our big screen for one night only. Look out for Welsh Rugby World Cup games being screened on our cinema screen during the autumn!

With all that, plus our usual mix of top quality music, drama, entertainment and family shows, we have the whole family covered.

Why not become more involved at The Welfare by becoming a 'Friend of the Hall', help out at events or even just sharing our posts on social media? See page 24-25 for more info. Don't forget to keep up to date with any late additions to our programme by keeping an eye on our website or following us on Facebook.

We look forward to seeing you soon.

**Helo a chroeso i dymor cyffrous arall o adloniant byw, sinema a chelfyddydau cymunedol yn y Neuadd Les.**

Ry'n ni wrth ein bodd croesawu taith Roots **Cwmni Dawns Cenedlaethol Cymru** yn ôl fis Tachwedd eleni i gyflwyno pedwar darn dawnsio cryno. Ry'n ni wedi ychwanegu comedi at ein harlwy y tymor yma, yn ogystal â'r amrywiaeth boblogaidd o ddarllediadau bale, opera a theatr byw, a bydd taith olaf **Syr Billy Connolly** yn cael ei dangos ar ein sgrîn fawr am un noson yn unig.

Yn ogystal â hyn, ynghyd â'n cymysgedd arferol o gerddoriaeth, drama, adloniant a sioeau teulu o'r safon uchaf, mae digon i'r teulu cyfan ei fwynhau.

Beth am gymryd rhan mwy blaenllaw yn y Neuadd Les trwy ddot yn 'Cyfaill i'r Neuadd', helpu allan mewn digwyddiadau, neu hyd yn oed rhannu ein negeseuon ar y cyfryngau cymdeithasol? Mae tudalen 24-25 yn cynnig rhagor o wybodaeth. Peidiwch ag anghofio darganfod unrhyw ddiweddariad hwyr i'n rhaglen trwy gadw llygad ar ein gwefan neu ein dilyn ni ar Facebook.

Edrychwn ymlaen at eich gweld yn fuan.


## GET IN TOUCH! DOD I GYSYLLTIAD!

 **01639 843 163**

 **boxoffice@thewelfare.co.uk**

 Find us on Facebook / Instagram:  
Dewch o hyd i ni ar Facebook:

 **@welfare.ystradgynlais**

 And follow us on / A dilynwn ni ar Twitter: **@TheWelfare1**

## BOOK ONLINE! ARCHEBU AR-LEIN! [www.thewelfare.co.uk](http://www.thewelfare.co.uk)

**Keep up to date /  
Cael yr wybodaeth ddiweddaraf**

To receive our brochure & for regular updates via email, join our free mailing list by contacting us on:

 **boxoffice@thewelfare.co.uk**

**Box Office Opening Times:**  
**Monday – Friday: 9am – 3pm**  
And 45 minutes before every event

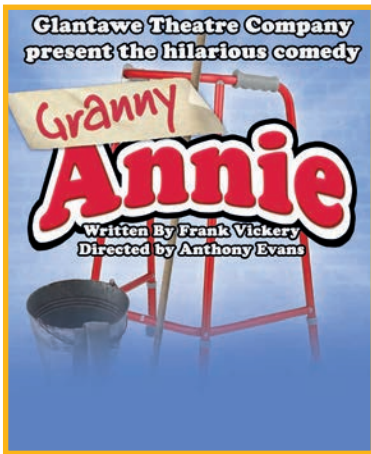
**Oriau Agor y Swyddfa Docynnau:**  
**Dydd Llun – Dydd Gwener 9yb – 3yp**  
A 45 munud cyn pob digwyddiad

# 01639 843 163

**boxoffice@thewelfare.co.uk**

**Reservations:**

Please note, reserved tickets will need to be paid for and collected within 7 days of booking.



## Granny Annie

Glantawe Theatre Company

**Wednesday 4, Thursday 5  
& Friday 6 September, 7pm**  
**Dydd Mercher 4, Dydd Iau 5  
& Dydd Gwener 6 Medi, 7yh**

The Glantawe Theatre Company present a guaranteed night of laughter, with Frank Vickery's hilarious comedy, felt by many to be one of his best.

The Glantawe Theatre Company are an award winning Community Group. Members of the Company won National Recognition for their performances in Annie in September of last year with the National Operatic and Dramatic Association. They have also won numerous awards for their productions in the Glamorgan Drama League's Glammies.

Mae Cwmni Theatr Glantawe'n cyflwyno noson lle byddwch yn sicr o chwerthin gyda chomedi ddigrif tu hwnt Frank Vickery, sydd, yn nhyb llawer, ymysg ei oreuon.



**£8.50, £7.50**  
**Concessions Consesiynau**



## Margaret Atwood

Live in Cinemas

**Tuesday 10 September, 7.30pm**  
**Dydd Mawrth 10 Medi, 7.30yh**

The wait is over....*The Testaments*, Margaret Atwood's highly anticipated sequel to *The Handmaid's Tale*, is revealed. Live from the London stage, the Canadian novelist, poet, literary critic and inventor will be interviewed about her remarkable career, and why she has returned to her seminal handmaid story, 34 years later.

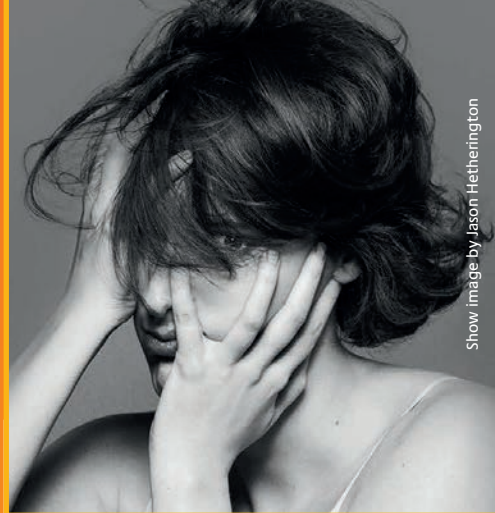
Atwood's *The Handmaid's Tale* has created a cultural phenomenon, as handmaids have become a symbol of women's rights and a protest against misogyny and oppression.

Mae'r aros drosodd.... Datgelir *The Testaments*, dilyniant hir ddisgwyliedig Margaret Atwood i *The Handmaid's Tale*. Bydd y digwyddiad llenyddol pwysig hwn yn cael ei ddathlu gyda darllediad sinema byw unigryw, wrth i Fane Productions gyflwyno noson gyda'r nofelydd, y bardd, y beirniad llenyddol a'r dyfeisiwr o Ganada, yn fyw o un o lwyfannau Llundain.

Mae cyhoeddi *The Handmaid's Tale* gan Atwood yn 1985 a'r gyfres deledu gyfredol sydd wedi ennill gwobr Emmy wedi creu ffenomen ddiwylliannol, gan fod morwynion wedi dod yn symbol o hawliau menywod a phrotest yn erbyn camymddwyn a gormes.



**£15, £12.50**  
**Concessions Consesiynau**



Show image by Jason Hetherington

## Fleabag

NLive

National  
Theatre  
Live

**Thursday 12 September, 7pm**

**Dydd Iau 12 Medi, 7yh**

The hilarious, award-winning, one-woman show that inspired the BBC's hit TV series *Fleabag*, broadcast live from London's West End. *Fleabag* is a rip-roaring look at some sort of woman living her sort of life.

Fleabag may seem oversexed, emotionally unfiltered and self-obsessed, but that's just the tip of the iceberg. With family and friendships under strain and a guinea pig café struggling to keep afloat, Fleabag suddenly finds herself with nothing to lose.

Written and performed by Phoebe Waller-Bridge. Directed by Vicky Jones.

Darlledir y sioe ddoniol un-ferch sydd wedi ennill gwobrau ac ysgogi cyfres deledu boblogaidd y BBC. Golwg ar fywyd merch benodol yw *Fleabag*.

Mae'n bosibl fod *Fleabag* yn ymddangos ei bod yn or-hoff o ryw, yn llawn emosiynau amrwd ac yn hunan-obsesiynol, ond dim ond rhan o'r stori yw hynny. Gyda'i theulu a'i chyfeillgarwch dan straen, a chaffi arbrofol yn ceisio talu'i ffordd, mae Fleabag yn darganfod yn sydyn iawn nad oes ganddi ddim i'w gollu.

Ysgrifennwyd a pherfformiwyd gan Phoebe Waller-Bridge. Cyfarwyddwraig Vicky Jones.



**£13, £11 Concessions Consesiynau**



## Superstars of Welsh Wrestling

**Friday 20 September, 7pm**

(Doors open 6.30pm)

**Dydd Gwener 20 Medi, 7yh**

(Drysau yn agor am 6.30yh)

Come join us for an evening of glitz, glamour and bodyslam mayhem as the American Wrestling roadshow invades for one night only! Come see the over the top stars of the wrestling world collide in a night of super slamming action at this fun, crazy, family entertainment show.

Don't miss the hottest ticket in town, book now and LET'S GET READY TO RUMBLE!!!

Dewch i ymuno â ni am noswaith o sêr, cyfaredd ac anrhefn clatsio cyrff fel y bydd y sioe wrestlo deithiol Cymraeg yn goresgyn y dref am un noswaith yn unig! Dewch i weld prif sêr bywiog y byd wrestlo mewn noson anhygoel o glatsio cyrff yn y sioe ddi-fyr, wallgof hon o ddi-fyrwrch i'r teulu.

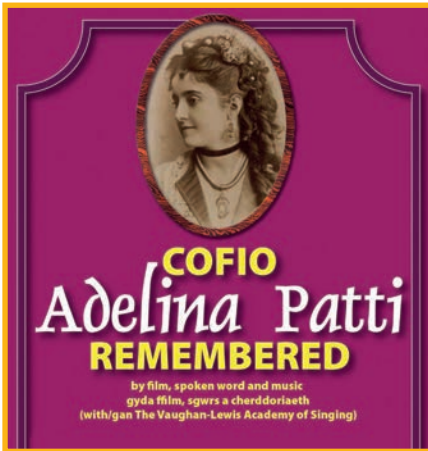
Peidiwch â cholli cyfle i gael tocy'n i'r sioe hynod boblogaidd hon a BOD YN BAROD I WNEUD STŴR MAWR!!!



**£11 Adults Oedolion**

**£9 Children Plant**

*"My boys love the show! Being a big fan of wrestling myself, Welsh Wrestling is way more entertaining than WWE!!"*



## Cofio Adelina Patti Remembered

**Thursday 26 September, 7pm**  
**Dydd Iau 26 Medi, 7yh**

September 2019 marks 100 years since opera singer Adelina Patti, one of the greatest sopranos in history, died at her home in Craig-y-Nos in Powys. Composer Giuseppe Verdi described her as perhaps the finest singer who had ever lived and a "stupendous artist".

To commemorate the centenary, join us at The Welfare as we celebrate her life. The evening will include a brief talk on Patti's life, followed by a short film with some of her musical items being performed by The Vaughn-Lewis Academy of Singing.

Mae mis Medi 2019 yn nodi can mlynedd ers i'r gantores opera Adelina Patti, un o'r sopranos gorau mewn hanes, farw yn ei chartref yng Nghraig-y-Nos ym Mhowys.

I goffâu'r canmlwyddiant, ymunwch â ni yn y Neuadd Les i ddathlu ei bywyd. Bydd y noson yn cynnwys anerchiad byr ar fywyd Patti ac yna ffilm gyda rhai o'i heitemau cerddorol yn cael eu perfformio gan Academi Canu Vaughn-Lewis.

More Adelina Patti related local events can be found here: Gallwch weld mwy o ddiwyddiadau lleol sy'n gysylltiedig ag Adelina Patti yma:

 Adelina Patti Celebrations 2019

 £5



## One Man, Two Guvnors

NLive – Encore Screening

**Sunday 29 September, 3pm**  
**Dydd Sul 29 Medi, 3yp**

**National  
Theatre  
Live**

Original 2011 screening.

By Richard Bean, based on *The Servant of Two Masters* by Carlo Goldoni, with songs by Grant Olding.

Featuring a Tony Award-winning performance from host of the *The Late Late Show*, *James Corden*, the hilarious West End and Broadway hit returns to our cinema screen to mark National Theatre Live's 10th birthday.

Gan Richard Bean, yn seiliedig ar *The Servant of Two Masters* gan Carlo Goldoni, gyda chaneuon gan Grant Olding.

Yn cynnwys perfformiad a enillodd wobwr Tony gan westeiwr *The Late Late Show*, *James Corden*, mae'r sioe boblogaidd o'r West End a Broadway, *One Man, Two Guvnors* yn dychwelyd i'n sgrin sinema i nodi 10fed pen-blwydd National Theatre Live.



**£13, £11 Concessions Consesiynau**

 01639 843163

 [www.thewelfare.co.uk](http://www.thewelfare.co.uk)

 [boxoffice@thewelfare.co.uk](mailto:boxoffice@thewelfare.co.uk)



## peeling

Taking Flight Theatre with The Riverfront and Chapter

**Wednesday 2 October, 7.30pm**

**Dydd Mercher 2 Hydref, 7.30yh**

From award-winning playwright Kaite O'Reilly.

In shadow, 3 performers await their brief moment in the light.

Alfa, Beaty and Coral wait... wait while once more the action plays out elsewhere.

Often blisteringly funny, at times almost unbearably painful; peeling takes us backstage into a world of secrets, a world of stories about mothers and their children, a world where these fierce, intelligent and capable women are always the chorus and never the lead.

Following a critically acclaimed tour of Wales, peeling challenges you to experience theatre afresh. Whose stories do we tell? And who will be there to bear witness?

With interwoven BSL, live audio description and captions. Contains adult themes.

Yn y cysgod, mae 3 perfformiwr yn aros am eu cyfnod bychain yn y goleuni, eu geiriau wedi eu claddu yn y llwch, drwy goridor hir amser. Rydym am ddad-gladdu nhw fan hyn. Mi glywn ni nhw yn adleisio yn y tywyllwch.

Alfa, Beattie a Coral. Mae eu geiriau nhw wedi eu claddu mewn llwch ac amser. Rydym am ddad-gladdu nhw fan hyn. Mi fydd y ddinas yn disgyn.

Cyda IAP yn cyd-blethu â sain ddisgrifio byw a chapsiynau Saesneg ym mhob sioe, bydd 'peeling' yn herio'r gynulleidfa i brofi theatr o'r newydd. Straeon pw ydym am eu hadrodd? A phwy fydd yna i'w tystio nhw?

*"Fiercely clever and uncompromising"*

★★★★ **The Guardian**



**£12, £10 Concessions Consesiynau**

☎ **01639 843163**

🌐 **www.thewelfare.co.uk**

✉ **boxoffice@thewelfare.co.uk**



## Gareth Thomas & Friends

Stand Up to Mental Health

**Friday 4 October, 8pm** (Doors Open: 7.30pm)

**Dydd Gwener 4 Hydref, 8yh**

(Drysau yn agor am 7.30yh)

Gareth Thomas brings some of his comedy friends for a night of stand-up comedy and fun in aid of raising money to provide services locally for Ystradgynlais Mind.

All proceeds go directly to Ystradgynlais Mind.

Mae Gareth Thomas yn dod â rhai o'i ffrindiau comedi am noson o gomedi stand-yp a hwyl er mwyn codi arian i ddarparu gwasanaethau yn lleol ar gyfer Mind Ystradgynlais.

Mae'r holl elw yn mynd yn syth i Mind Ystradgynlais.



£10



## The Ultimate Classic Rock Show

**Saturday 5 October, 8pm**

**Dydd Sadwrn 5 Hydref, 8yh**

Back by popular demand, The Welfare Ystradgynlais welcome back **The Ultimate Classic Rock Show**.

Dust off your air guitars for an evening of the very best classic rock anthems from legends past and present! Let them take you on a roller coaster journey of classic rock nostalgia, performing hit after hit, live with stunning accuracy and high energy accompanied by an incredible light and projection show, they're guaranteed to have you on your feet all night.

Dystiwch y llwch oddi ar eich gitarau awyr ar gyfer noson o'r anthemau roc clasurol gorau gan chwedlau'r gorffennol a'r presennol! Gadewch iddyn nhw fynd â chi ar daith 'roller coaster' o nostalgia roc clasurol, gan berfformio hit ar ôl hit, yn fyw gyda chywirdeb syfrdanol ac egni ynghyd â sioe anhygoel o olau a thafunio, maent yn sicr o'ch cael chi ar eich traed drwy'r nos.



£16

01639 843163

[www.thewelfare.co.uk](http://www.thewelfare.co.uk)

[boxoffice@thewelfare.co.uk](mailto:boxoffice@thewelfare.co.uk)



Production photo of Don Giovanni, The Royal Opera @2018 ROH. Photograph by Bill Cooper.

## Don Giovanni

Royal Opera House



**Tuesday 8 October, 6.45pm**

**Dydd Mawrth 8 Hydref, 6.45yh**

Sexual intrigue, jealousy, wit, anger... and retribution! The new **Royal Opera** Season begins with **Mozart's** engaging masterpiece, which follows Don Giovanni, the women he serially seduces, and the vengeance that finally catches up with him.

Co-production with Israeli Opera, Gran Teatre del Liceu, Barcelona, and Houston Grand Opera. Sung in Italian with English subtitles

Dirgelwch rhywiol, cenfigen, ffraethineb, dicter ... a dial! Mae Tymor newydd yr **Opera Brenhinol** yn dechrau gyda champwaith cyffrous **Mozart**, sy'n dilyn Don Giovanni, y merched y mae'n eu hudo, a'r dial sydd o'r diwedd yn dal i fyny gydag ef.

Cyd-gynhyrchiad gydag Opera Israel, Gran Teatre del Liceu, Barcelona, a Houston Grand Opera. Cenir mewn Eidaleg gydag isdeitlau Saesneg.



**£15, £12.50**

**Concessions Conesiyau**



## Billy Connolly: The Sex Life of Bandages

**Thursday 10 October, 7pm**

**Dydd Iau 10 Hydref, 7yh**

Hailed as the UK's most influential comedian of all time, legendary Scot Billy Connolly comes to our cinema screen with this brilliant show from his final stand-up tour. Recorded in 2015, during the Australian leg, this whip smart routine is a riotous journey filled with outrageous tales and blistering observations of everyday absurdities.

A big screen tribute to an iconic funny-man whose sharp wit and anarchic storytelling is still as hilarious as ever.

Galwyd Billy Connolly yn gomedïwr mwyaf dylanwadol erioed y DU. Daw'r Albanwr anhygoel i'r sgrîn yn y sioe wych hon o'i daith olaf. Recordiwyd y rhan hon o'r daith pan oedd yn Awstralia yn ystod 2015, ac mae'n siwrnau ddigon gwylt yn llawn o hanesion gwarthus a sylwadau craff am y pethau afresymol y deawn ar eu traws bob dydd.

Teyrnged sgrim fawr i ddigrifwr eiconig y mae ei arabedd llym a'i ddull anarchaidd o adrodd stori yr un mor is ddifur ag erioed.



**£15, £13**

**Concessions Conesiyau**

★★★★ *"Can he still hold an audience in his thrall - warm us, cheer us, tickle us? Abso - Billy - lutely!"* **The Telegraph**





## I Wish I Was a Mountain

Co-Produced by the egg and Travelling Light Theatre Company.

Presented on tour in Wales by Theatr Iolo

**Sunday 13 October, 4pm**

**Dydd Sul 13 Hydref, 4yp**

8+  
YRS

Based on *Faldum* - A fairy tale by Hermann Hesse.

On the day of the famous annual fair, the town of Faldum receives an unexpected visit. A wanderer offers to grant a wish to anyone who wants one. Before long, the city is transformed. Mansions stand where mud huts once squatted, and beggars ride around in horse drawn carriages. And one man wishes to be turned into a mountain.

Written and performed by former Glastonbury Poetry Slam Champion Toby Thompson, *I Wish I was a Mountain* uses rhyme, live music, and just a smattering of metaphysical philosophy to boldly reimagine Hermann Hesse's classic fairy-tale.

Co-commissioned by Imagine and Brighton Dome  
Sponsored by The Tulip Partnership and Swainswick Explorers

*"A beautiful show for over-sevens. With wonder, wit and sophisticated storytelling, I Wish I Was a Mountain embraces big questions about time and contentment."*

★★★★ **The Guardian**

Wedi'i seilio ar *Faldum* – Stori dylwyth teg gan Hermann Hesse.

Un o Bencampwyr gynt Barddoniaeth Slam Ynys Wydrin, Toby Thompson, a sgrifennodd ac sy'n perfformio *I Wish I was a Mountain*, sy'n defnyddio odl, cerddoriaeth fyw, a rhyw flewyn bach o athroniaeth fetafisegol i ail-ddychmygu'n feiddgar stori dylwyth teg glasurol Hermann Hesse.



**£10 Adults Oedolion**  
**£6 Children Plant,**  
**£8 Concessions Consesiynau**



**01639 843163**



**www.thewelfare.co.uk**



**boxoffice@thewelfare.co.uk**



## A Midsummer Night's Dream

NLive

National  
Theatre  
Live

Thursday 17 October, 7pm

Dydd Iau 17 Hydref, 7yh

By William Shakespeare

A feuding fairy King and Queen of the forest cross paths with four runaway lovers and a troupe of actors trying to rehearse a play. As their dispute grows, the magical royal couple meddle with mortal lives leading to love triangles, mistaken identities and transformations... with hilarious, but dark consequences.

Shakespeare's most famous romantic comedy will be captured live from the Bridge Theatre in London. Gwendoline Christie, Oliver Chris, David Moorst and Hammed Animashaun star.

Mae Brenin a Brenhines tylwyth teg y goedwig yn cweryla â'i gilydd ac yn croesi llwybrau gyda phedwar o gariadon sydd wedi rhedeg i ffwrdd a grŵp o actorion sy'n ceisio ymarfer drama. Wrth i'w cweryl dyfu, mae'r cwpl brenhinol hudolus yn ymyrryd â bywydau meidrolion gan arwain at drioglau caru, cymysgu pwy ydy pwy a thrawsnewidiadau... gyda chanlyniadau doniol, ond tywyll.



£13, £11 Concessions Consesiynau



Don Pasquale, Opéranational de Paris ©Vincent Pontet

## Don Pasquale

Royal Opera House



ROYAL  
OPERA  
HOUSE

Thursday 24 October, 7.30pm

Dydd Iau 24 Hydref, 7.30yh

Royal Opera favourite **Bryn Terfel** heads the cast for this new production of **Donizetti's** comedy of domestic drama across two generations. The witty story of a middle-aged man whose supposed young wife runs rings around him – with her own ulterior romantic purpose in mind. **Damiano Michieletto's** exhilarating production shows how contemporary the characters still are and how immediate and touching the story remains.

Co-production with Opéra national de Paris and Teatro Massimo, Palermo. Sung in Italian with English subtitles.

Mae ffefryn yr **Opera Brenhinol Bryn Terfel**, i'w weld ym mhrif ran y cynhyrchiad newydd hwn o gomedï Donizetti o ddrama ddomestig ar draws dwy genhedlaeth. Mae stori ffraeth dyn canol oed y mae ei wraig ifanc dybiedig yn rhedeg cylchoedd o'i amgylch - gyda'i phwrpas rhamantus ei hun mewn. Mae cynhyrchiad cyffrous **Damiano Michieletto** yn dangos pa mor gyfoes yw'r cymeriadau a pha mor deimladwy yw'r stori o hyd.

Cyd-gynhyrchiad gyda Opéra National de Paris a Teatro Massimo, Palermo. Cenir mewn Eidaleg gydag isdeitlau Saesneg.



£15, £12.50

Concessions Consesiynau



## The Man Who Planted Trees

Puppet State Theatre Company

**Sunday 27 October, 4pm**

**Dydd Sul 27 Hydref, 4yp**

7+  
YRS

A French Shepherd sets out with his dog to plant a forest and transform a barren wasteland. As war rages across Europe, their young forest comes under threat.

This multi-sensory theatrical adaptation of Jean Giono's environmental classic is a unique blend of comedy, puppetry and storytelling with sensory effects creating scents, wind and rain. As much an inspiring and unforgettable tale as it is a hilarious puppet show, THE MAN WHO PLANTED TREES shows us the difference one man (and his dog!) can make to the world.

This multi award-winning adaptation by Puppet State Theatre Company has been touring since 2006 to schools, village halls, theatres and festivals across the UK and Ireland and internationally to Malaysia, Bermuda, USA, Canada, New Zealand and Australia including performances off Broadway at the New Victory Theatre and repeat visits to the Sydney Opera House and New York's Lincoln Center Institute.

*"An intriguing, multi-layered story that leaves your pondering long after it's finished."* ★★★★★ **The List**

Mae bugail Ffrengig yn mynd allan gyda'i gi i blannu coedwig a thrawsnewid tir anial. Ond daw'r rhyfel ar draws Ewrop i fygwth eu coedwig ifanc.

Mae'r addasiad theatrig aml-synhwyrol yma o glasur amgylcheddol Jean Giono yn gymysgedd unigryw o gomedi, pypedwaith ac adrodd straeon gydag effeithiau synhwyrol sy'n creu arogleuon gwynt a glaw. Yn ogystal â bod yn sioe bypedau difyr dros ben, mae'n un sy'n fythgofiadwy ac yn ein hysbrydoli. Mae THE MAN WHO PLANTED TREES yn dangos y gwahaniaeth y gall un dyn (a'i gi!) ei wneud i'r byd.



**£10 Adults Oedolion**

**£6 Children Plant**

**£8 Concessions Consesiynau**



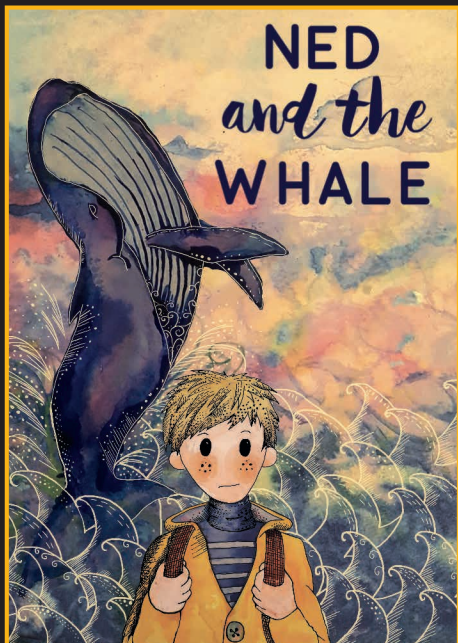
**01639 843163**



**[www.thewelfare.co.uk](http://www.thewelfare.co.uk)**



**[boxoffice@thewelfare.co.uk](mailto:boxoffice@thewelfare.co.uk)**



## Ned and the Whale

A Flossy and Boo and  
RCT Theatres Co-Production

**Monday 28 October, 11am & 3pm**  
**Dydd Llun 28 Hydref, 11yb & 3yp**

The magical tail of Ned and the Whale begins a little like this...

With buckles and swash, this story's awash with a mysterious odour of fish. Though sharp as a pin, Ned's courage was thin, for his sister was terribly mean.

She spouted great lies: 'A Kingdom of Spies will steal you and harvest your spleen!'

A fishy tale of magic and adventure. Sail away on a quest to help Ned find his courage and discover the truth behind the mysterious Kingdom of Spies. Flossy and Boo bring you their curiously spellbinding brand of storytelling.

Mae hanes hudolus Ned a'r Morfil yn tasgu a rhoio fel tonnau'r môr - yn llawn antur a chyffro. Ond does dim dianc rhag y ffaith ryfedd...bod arogl pysgod ym mhob man. Er ei fod yn fachgen craff, dydy Ned ddim yn teimlo'n ddewr achos mae ei chwaer yn hen gnawes gas. Mae hi'n rhaffu celwyddau dychrynlyd am Deyrnas yr Ysbiwyr ac yn codi bwganod ym mhen Ned.

Mae Ned and The Whale yn stori forwrol, arwrol ac aruthrol. Dewch ar daith dros y tonnau i helpu Ned i ffeindio ei ddewrder a datgelu'r gwir am Deyrnas yr Ysbiwyr. Plymiwch i mewn a gadewch i ddull adrodd straeon rhyfedd a rhyfeddol Flossy and Boo eich cario a'ch hudo.



**£6 Adults Oedolion**

**£5 Children Plant**

**£20 Family of 4 Teulu o 4**



## Ned and the Whale Workshop

Monday 28 October, 1 – 2pm

Dydd Llun 28 Hydref, 1 – 2yp

Make your own theatre, use your creativity and come with us on an exciting adventure. A fun 1 hour workshop with games and ideas to spark your imagination and have something new to take home. Make up some unusual creatures from birds in the sky to swamp monsters from the deep, we are going on an adventure so the possibilities are endless. Fun for children and their grown-ups. Little ones may need some support so we ask that all grown ups come with their children and enjoy the adventure too.



£3 per child



## Hansard

NLive

National  
Theatre  
Live

Thursday 7 November, 7pm

Dydd Iau 7 Tachwedd, 7yh

It's a summer's morning in 1988 and Tory politician Robin Hesketh has returned home to the idyllic Cotswold house he shares with his wife of 30 years, Diana. But all is not as blissful as it seems. Diana has a stinking hangover, a fox is destroying the garden, and secrets are being dug up all over the place. As the day draws on, what starts as gentle ribbing and the familiar rhythms of marital scrapping quickly turns to blood-sport. Starring two-time Olivier Award winners, Lindsay Duncan (*Birdman*) and Alex Jennings (*The Queen*).

Mae'n fore o haf ym 1988 ac mae Robin Hesketh, gwleidydd Toriaidd, wedi dychwelyd adref i'r tŷ delfrydol yn y Cotswolds y mae'n ei rannu gyda'i wraig, Diana, y bu'n briod â hi ers 30 o flynyddoedd. Ond nid yw popeth mor ddedwydd ag y mae'n ymddangos. Mae Diana yn dioddef o effeithiau yfed, mae llwynog yn dinistrio'r ardd, ac mae cyfrinachau'n dod i'r golwg ym mhob man. Gyda Lindsay Duncan (*Birdman*) a Alex Jennings (*The Queen*).



£13, £11 Concessions Consesiynau

01639 843163

[www.thewelfare.co.uk](http://www.thewelfare.co.uk)

[boxoffice@thewelfare.co.uk](mailto:boxoffice@thewelfare.co.uk)



## Tic Toc

Parama 2

**Friday 8 November, 2pm & 7.30pm**

**Dydd Gwener 8 Tachwedd, 2yp & 7.30yh**

---

Tic Toc is a brand new fun musical paying homage to the women factory workers of Wales. The show is full of stories of lives led to the full, the joys of camaraderie, tales of life long close friendships and triumphs over hardships... helped along with the women's courage and love of dance and music...

Women's Archive Wales pioneering oral history project 'Voices from the Factory Floor' recorded the memories of 200 women who worked in factories the length and breadth of Wales, but have since closed, including our own 'Tic Toc' factory in Ystradgynlais.

*"Neat storytelling, relying on the punch of the words and their delivery... and funny!"*

**Helen Joy: [getthechance.wales](http://getthechance.wales)**

Sioe gerddorol hwyliog newydd sbon yn talu teyrnged i fenywod y ffatrioedd - mae Tic Toc yn llawn hanesion am fywydau wedi byw i'r eithaf, pwysigrwydd cyfeillgarwch agos am oes a straeon am frwydr glew y menywod dros gydraddoldeb yn wyneb caledi... wedi liniaru gan eu hoffter o ganu a dawnsio!



**£12, £10 Concessions Consesiynau**

---

## Documentary Film:

**From 'Voices' to the Stage / O'r 'Lleisiau' i'r Llwyfan**

**Wednesday 9 October, 7pm / Dydd Mercher 9 Hydref, 7yh**

---

*Tic Toc – the musical is on its way...* but in the meantime we present a screening of Tic Toc – the movie, a sneak preview and documentary that charts the journey from oral history to the stage. The film will be preceded by a short talk with historian Catrin Stevens about the background of the show and the real life characters that appear. The screening will be followed by a question and answer session.

Mae *sioe gerdd Tic Toc* ar y ffordd... ond i aros pryd byddwn yn cyflwyno dangosiad o ffilm Tic Toc - cyfle i wyllo rhagflas a dogfen sy'n dilyn hynt y daith o hanes llafar i'r llwyfan. Cynhelir sgwrs fer gan yr hanesydd Catrin Stevens am gefndir y sioe a'r cymeriadau cig a gwaed sy'n ymddangos. Cynhelir sesiwn cwestiwn ac ateb ar ôl y dangosiad.

**Free**

---



## Exhibition

### Joan Baker Exhibition: The Chosen Way

**9 October – 9 November**

**9 Hydref – 9 Tachwedd**

An Exhibition of work by Joan Baker the first woman to become a lecture and then Head of Department at Cardiff College of Art. Private view to be part of the above event.

A partnership exhibition with the **Josef Herman Art Foundation**.

A Private viewing will accompany the film From **'Voices' to the Stage / O'r 'Lleisiau' i'r Llwyfan**

**Wednesday 9 October, 7pm**

**Dydd Mercher 9 Hydref, 7yh**

**FREE**



## Concerto Enigma Variations Raymonda Act III

Royal Opera House

**Sunday 10 November, 2pm**

**Dydd Sul 10 Tachwedd, 2yp**

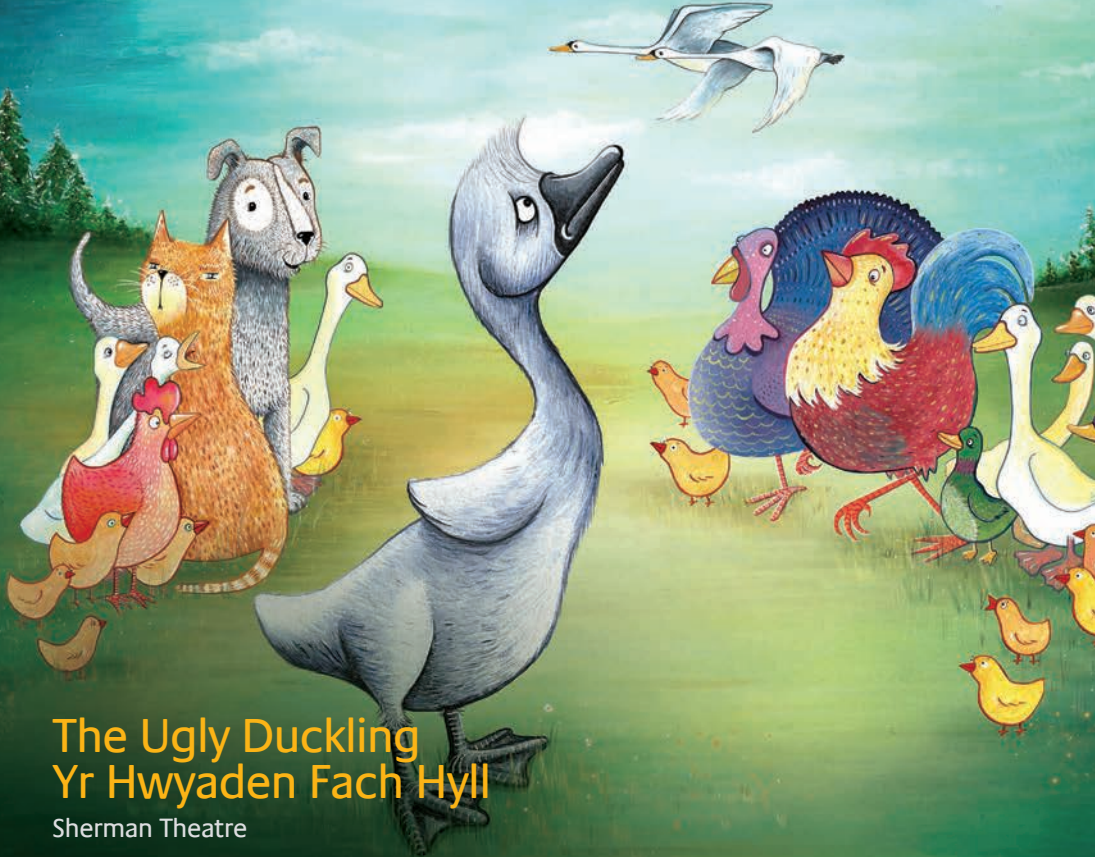


From The Royal Ballet's classical origins in the works of Marius Petipa, to the home-grown choreographers who put British ballet on the world stage, this mixed programme highlights the versatility of the Company. Petipa's Raymonda Act III is Russian classical ballet summarized in one act, full of sparkle and precise technique, while Ashton's Enigma Variations is quintessentially British in every way.

O darddiadau clasurol The Royal Ballet yng ngwaith Marius Petipa, i'r coreograffwyr brodorol sy'n rhoi bale Prydeinig ar lwyfan y byd, mae'r rhaglen gymysg hon yn rhoi sylw i hyblygrwydd y Cwmni. Mae Act III Raymonda gan Petipa yn bale clasurol Rwsiaidd sydd wedi'i grynhoi mewn un act, yn llawn techneg ddisglair a manwl, tra bod Enigma Variations Ashton yn Brydeinig yng mhob ffordd.



**£15, £12.50 Concessions  
Consesiynau**



## The Ugly Duckling Yr Hwyaden Fach Hyll

Sherman Theatre

Friday 15 November, 11am (English) & 1.15pm (Welsh)

Dydd Gwener 15 Tachwedd, 11yb (Saesneg) & 1.15yp (Cymraeg)

A warm and fluffy tale of friendship and belonging.

Join the brave Ugly Duckling as he waddles his way through the changing seasons on an exciting journey to a place he can call home; meeting a whole host of charming farmyard friends on the way.

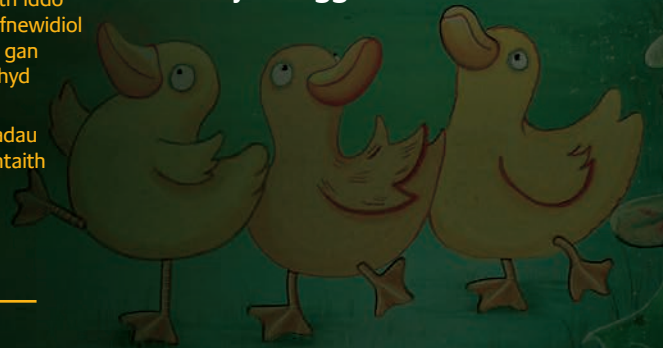
Full of enchanting music and playful characters *The Ugly Duckling* is the perfect heart-warming treat for all.

Stori galonnog a fflwffyd am gyfeillgarwch a pherthyn.

Ymunwch â'r Hwyaden Fach Hyll dewr wrth iddo gerdded o glun i glun drwy'r tymhorau cyfnewidiol ar siwrmai gyffrous i le y gall alw'n gartref; gan gyfarfod llu o gyfeillion fferm dymunol ar hyd y ffordd.

Yn llawn cerddoriaeth hudolus a chymeriadau chwareus Yr Hwyaden Fach Hyll yw'r ddantaith twym-galon perffaith ar gyfer y rheiny rhwng 3 – 6 oed.

*"The Ugly Duckling is perfect entertainment for families with young children – and I'm sure I'm not the only grown-up who left the theatre with a warm and fuzzy feeling."* Cardiff Mummy Says, Blogger



 £6





## Roots

National Dance Company Wales

**Thursday 21 November, 7.30pm**

**Dydd Iau 21 Tachwedd, 7.30yh**

Four short pieces of dance from Wales, followed by discussions to help you get to the heart of the stories, and learn behind-the-scenes secrets.

**Rugby: Dear to me** by **Fearghus Ó Conchúir** celebrates rugby in Wales and was created with input from players across Wales.

**Écrit** by **Nikita Goile** was inspired by a letter from artist **Frida Kahlo** to her partner Diego and reflects the ups and downs of passionate relationships.

**Why Are People Clapping!?** by **Ed Myhill** is set to composer **Steve Reich's Clapping Music** and the dancers use movement and clapping to create the soundtrack.

**Codi** is by **Anthony Matsena** who grew up in Swansea and is about Welsh people who come together to tackle depression during troubled times.

Pedwar darn dawns byr o Gymru, wedi'u paru gyda thrafodaeth i'ch helpu i fynd at wraidd y straeon, a dysgu'r cyfrinachau o'r tu ôl i'r llenni.



**£13, £10 Concessions Consesiynau**  
Discounts available for schools/groups  
Gostyngiadau ar gael i grwpiau



## Present Laughter

NTLive

**National  
Theatre  
Live**

**Thursday 28 November, 7pm**

**Dydd Iau 28 Tachwedd, 7yh**

As he prepares to embark on an overseas tour, star actor Garry Essendine's colourful life is in danger of spiralling out of control. Engulfed by an escalating identity crisis as his many and various relationships compete for his attention, Garry's few remaining days at home are a chaotic whirlwind of love, sex, panic and soul-searching.

Noël Coward's provocative comedy - A giddy and surprisingly modern reflection on fame, desire and loneliness.

Wrth iddo baratoi i gychwyn ar daith dramor, mae bywyd lliwgar yr actor Garry Essendine mewn perygl o fynd allan o reolaeth. Wedi'i amlyncu gan argyfwng hunaniaeth cynyddol wrth i'w gydberthnasau niferus ac amrywiol gystadlu am ei sylw, mae'r ychydig ddyddiau sy'n weddill gan Garry yn ei gartref yn chwyrlywynt anhrefnus o gariad, rhyw, panig a chwilio'r enaid.

Nghomedi pryfoclyd Noël Coward - Fyfyrdod dryslyd a rhyfeddol o fodern ar enwogrwydd, awydd ac unigrwydd.



**£13, £11 Concessions Consesiynau**



## Peatbog Faeries

Friday 29 November, 8pm

**Dydd Gwener 29 Tachwedd, 8yh**

This legendary band are back on the road in Wales and are sure to delight new audiences in Ystradgynlais.


Hailing from the Isle of Skye, the Peatbog Faeries are the figurehead trailblazers of the Celtic Dance Music renaissance. Drawing upon a dazzling myriad of influences from traditional jigs and reels through jazz, hip hop, reggae and more, they take traditional Scottish music and bring it fresh-faced and breathless into the 21st century.

Mae Peatbog Faeries yn ôl ar y lôn ac yn dod i Ystradgynlais am y tro cyntaf! Ers ffurfio yn 1991, mae'r band, sydd yn hannu o Ynys Skye, Yr Alban wedi teithio'r byd a chael llwyddiant yn genedlaethol ac yn rhyngwladol.

Cyn enwebeion ar gyfer wob'r 'Y Band Byw Gorau' yng Ngwobrau Gwerin BBC Radio 2. Mae eu harddull unigryw a dyfeisgar yn cymysgu jigs traddodiadol â cherddoriaeth jazz, hip hop a reggae gan greu cyfuniad o gerddoriaeth Albanaidd draddodiadol a phŵer cerddoriaeth ddawns Geltaidd fywiog.

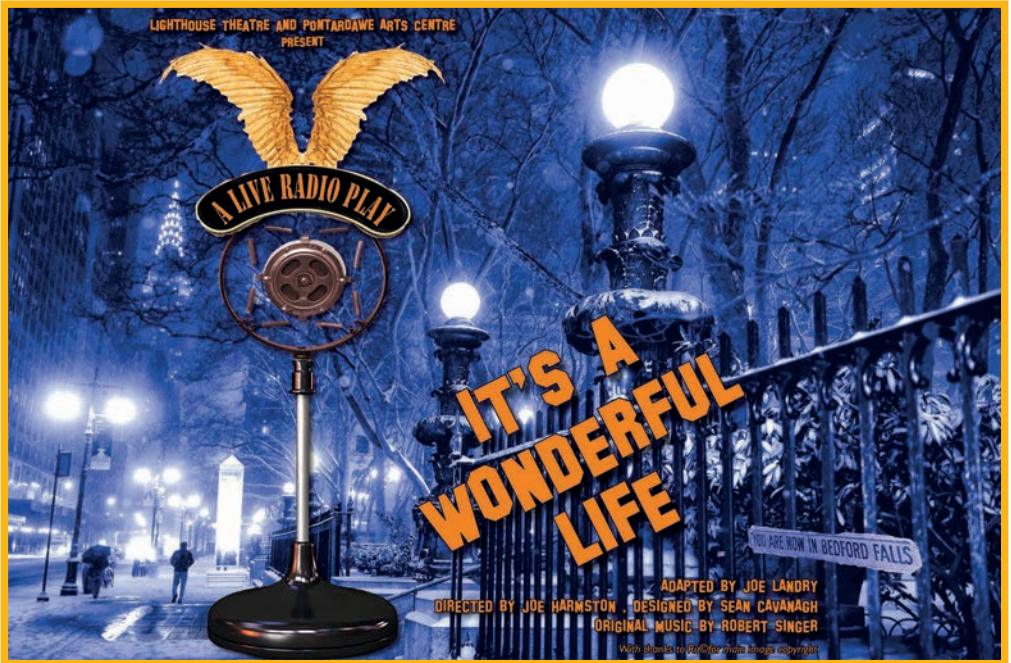


**£16, £13 Concessions Consesiynau**

 **01639 843163**

 **[www.thewelfare.co.uk](http://www.thewelfare.co.uk)**

 **[boxoffice@thewelfare.co.uk](mailto:boxoffice@thewelfare.co.uk)**



# It's a Wonderful Life

Lighthouse Theatre & Pontardawe Arts Centre

**Saturday 7 December, 7.30pm**

**Dydd Sadwrn 7 Rhagfyr, 7.30yh**

Inspired by the classic American film.

The story of idealistic George Bailey unfolds as he considers ending his life one fateful Christmas Eve. It will take help from a lovable angel, Clarence, for George to have a change of heart and understand the true spirit of the Christmas.

With live music and a cast of six actors bringing a radio recording studio and the town of Bedford Falls to life, Lighthouse Theatre and Pontardawe Arts Centre present this ingenious staging of a timeless classic film and seasonal favourite.

\*Supported by the Arts Council Wales and Ty Cerdd

Wedi'i ysbrydoli gan y ffilm Americanaidd glasurol.

Mae stori'r George Bailey llawn defnyddau yn datblygu wrth iddo ystyried dod â'i fywyd i ben un Noswyl Nadolig dyngedfennol. Bydd yn cymryd help gan angel hoffus, Clarence, i George newid ei feddwl a deall gwir ysbryd y Nadolig.

Gyda cherddoriaeth fyw a chast o chwe actor sy'n dod â stiwdio recordio radio a thref Bedford Falls yn fyw, mae'r Lighthouse Theatre a Chanolfan Gelfyddydau Pontardawe yn dod â'r ffilm glasurol ddiamsr a'r ffefryn tymhorol hwn i'n sylw.

\*Cefnogir gan Gyngor Celfyddydau Cymru a Thy Cerdd



**£12, £10 Concessions Consesiynau**



**01639 843163**



**www.thewelfare.co.uk**



**boxoffice@thewelfare.co.uk**



## The West End at Christmas

The West End in Concert

**Sunday 15 December, 7.30pm**

**Dydd Sul 15 Rhagfyr, 7.30yh**

Back by popular demand and their **8th year** performing to sold out audience at the Welfare...

Stars from the West End present a magical evening of entertainment featuring hits from the musicals and the best of Christmas song.

The talented cast have starred in many West End productions and national tours including Les Miserables, We Will Rock You, South Pacific, Starlight Express, Phantom Of The Opera, Wicked, Godspell, Joseph and Cats... to name but a few!

Yn ôl wedi galw poblogaidd a'r **8fed flwyddyn** yn perfformio i gynulleidfa a fydd yn llenwi'r Neuadd Les...

Mae sêr o'r West End yn cyflwyno noson hudolus o adloniant yn cynnwys caneuon poblogaidd o'r sioeau cerdd a'r gorau o'r caneuon Nadolig.

Mae'r cast talentog wedi serennu mewn nifer o gynrychiadau yn y West End ac ar deithiau cenedlaethol gan gynnwys Les Miserables, We Will Rock You, South Pacific, Starlight Express, Phantom of the Opera, Wicked, Godspell, Joseph a Cats... i enwi ond ychydig!



## Well Seasoned

**Thursday 19 December, 7pm**

**Dydd Iau 19 Rhagfyr, 7yh**

Well known for their "Rat Pack" style of music, local Swing Trio '**Well Seasoned**' perform solely to raise money for the **Wales Air Ambulance**. Over the past two years they have raised over £14,000 and this event follows on from their very successful show last summer, which had rave reviews.

The night will feature the trio performing various swing and rock & roll numbers and songs by guest artists along with a fabulous dance troupe, followed by a Rock & Roll disco with local DJ Geoff Ready. 50's style dress up encouraged - prize for the best costume. So lacquer your beehive, iron your bobby socks and come along and join the fun.



**£10**

**Tables of 8 can be booked in advance, full payment required on booking**



**£15, £13 Concessions Consesiynau**



## The Nutcracker

Royal Opera House



**Sunday 22 December, 2pm**

**Dydd Sul 22 Rhagfyr, 2yp**

It is Christmas Eve and Herr Drosselmeyer the magician sweeps young Clara away on a fantasy adventure in which time is suspended, the family living-room becomes a great battlefield, and a magical journey takes them through the Land of Snow to the Kingdom of Sweets. Tchaikovsky's glittering score, the gorgeous festive stage designs, and The Royal Ballet's captivating dancing including an exquisite pas de deux between the Sugar Plum Fairy and her Prince, make this *Nutcracker* the quintessential Christmas experience.

Mae'n Noswyl Nadolig ac mae Herr Drosselmeyer y dewin yn ysgubo'r Clara ifanc i ffwrdd ar antur ffantasi lle mae amser yn cael ei atal, mae ystafell fyw y teulu yn dod yn faes brwydr fawr, ac mae taith hudol yn mynd â nhw drwy Dir yr Eira i Deyrnas y Melysion. Mae sgôr ddisglair Tchaikovsky, y dyluniadau hyfryd ar gyfer y llwyfan Nadoligaidd, a dawnsio hudolus y Bale Brenhinol, gan gynnwys pas de deux rhyfeddol rhwng y Sugar Plum Fairy a'i Thywysog, yn gwneud y *Nutcracker* hwn yn brofiad Nadoligaidd hanfodol.

 **£15, £12.50**  
**Concessions Consesiynau**



## Andre Rieu: 70 Years Young

**Saturday 4 January, 7pm**

**Sunday 5 January, 3pm**

**Dydd Sadwrn 4 Ionawr, 7yh**

**Dydd Sul 5 Ionawr, 3yp**

André Rieu's ultimate concert featuring musical highlights chosen by André himself. This unique anniversary event will take you on an unbelievable journey around the world to his most amazing concert locations.

Cyngerdd eithaf André Rieu sy'n arddangos dewis André ei hun o uchafbwyntiau cerddorol. Bydd yr achlysur pen-blwydd yma yn eich tywys ar daith anghygoel o amgylch y byd i leoliadau mwyaf gwychaf ei gyngherddau.



**£13, £11 Concessions Consesiynau**

## Peter Pan

Glantawe Theatre Company

**Thurs 23, Fri 24 & Sat 25, 7pm**

**Sat 25 & Sun 26 January, 1.30pm**

**Dydd Iau 23, Dydd Gwener 24**

**& Dydd Sadwrn 25 Ionawr, 7yh**

**Dydd Sadwrn 25 &**

**Dydd Sul 26 Ionawr, 1.30yp**



**£8.50 Adults Oedolion**  
**£7.50 Concessions Consesiynau**  
**£25 Family of 4 Teulu o 4**

# Community and Arts



## PERFORMING & CREATIVE ARTS FOR ALL CELFYDDYDAU PERFFORMIO A CHREADIGOL I BAWB

**Tuesdays 1.30 – 3pm**  
**£4 per session, Carers free**  
**Dydd Mawrth 1.30 – 3pm**  
**£4 y sesiwn, Gofalwyr yn**  
**rhad ac am ddim**

Drama, dance and visual arts for an integrated group of adults and adults with learning disabilities.

With Michelle McTernan, Callum Coombs, Viv Rhule and other Artists.

Drama, Dawns a Chelfyddydau Gweledol ar gyfer grŵp integredig o Oedolion ac Oedolion ag Anableddau Dysgu. Gyda Michelle McTernan, Callum Coombs, Viv Rhule ac Artistiaid eraill.

## The Performance Factory Y Ffatri Berfformio

**Tuesdays 4.15pm - 5.15pm** Ages 3-6  
**5.15pm - 7.15pm** Ages 6+  
**Dydd Mawrth 4.15p - 5.15p**  
Oedrannau 3-6,  
**5.15p - 7.15p** Oedrannau 6+

The perfect introduction to the performing arts. Dechrau perffaieth i'r celfyddydau perfformio.

**Contact for tickets and more information:**  
**01792 701570**  
Cysylltwch â 01792 701570 am tocynnau a fwy o wybodaeth

## Crafty People Café Caffi Pobl Grefftus

**Tuesdays 11am – 1pm / Dydd Mawrth 11yb – 1yp**

Come and enjoy a cuppa and homemade cakes and rolls in the company of a friendly group of people. The Welfare and a number of local partners from the health & wellbeing sector have provided community artists to work with the public at our volunteer café. Everyone's contribution is valued, no experience necessary. Donations welcomed.

Dewch i fwynhau paned a chacennau a rholiau cartref yng nghwmni grŵp cyfeillgar o bobl. ae'r Neuadd a nifer o bartneriaethau lleol o'r sector iechyd a lles wedi darparu Artistiaid Cymunedol i gefnogi aelodau o'r gymuned yn y Caffi. Mae cyfaniad pob un yn cael ei werthfawrogi, does dim rhaid bod â phrofi ad. Croesewir Rhoddion.

## SOLAR DANCE

**Wednesdays 4.30pm – 5.15pm** Ages 5-8  
**5.15pm – 6pm** Ages 9-13 **6pm – 6.45pm** Ages 14+  
**Dydd Mercher 4.30-5.15yh** 5-8 oed  
**5.15-6yh** 9-13 oed **6- 6.45yh** 14+ oed

The original south wales dance school Est. 1994. New fun & friendly classes in Ystradgynlais. All abilities welcome, first class free!

**Contact Cysylltwch:**  
**01792 701570**

Cwmni dawns gwreiddiol de Cymru. Sefydlwyd ym 1994. Dosbarthiadau newydd cyfeillgar a llawn hwyl yn Ystradgynlais. Croeso i rai o bob gallu. Y dosbarth cyntaf am ddim!

## Fflach Festival / Gwyl y Fflach

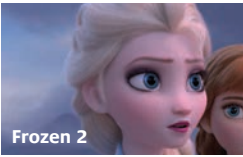
**Sunday 3 November, 11am – 4pm**  
**Dydd Sul 3 Tachwedd, 11am – 4yp**

A celebration day showcasing the skills and talents of people living with additional learning needs. Enjoy performances from inclusive companies, join in on music, drama and arts & crafts workshops, watch demonstrations lead by our team of friendly artists, and much more...

**FREE** All ages & abilities welcome

Diwrnod o ddathlu sgiliau a doniau pobl sy'n byw ag angheniog dysgu ychwanegol. Cyfle i fwynhau perfformiadau oddi wrth gwmnïau cynhwysol, ymunwch mewn gweithdai cerddoriaeth, drama a chelf a chreffft, gwylwch arddangosfeydd dan arweiniad ein tîm o arlunwyr cyfeillgar, a llawer mwy...  
**MYNEDIAD AM DDIM** Ar gyfer pob oedran a gallu

For our full programme of films, please visit our website  
Rhaglen llawn ar ein gwefan



## Frozen 2 (TBC)

Anna & Elsa travel to an enchanted land to find the origin of Elsa's powers.



## Downtown Abbey

The continuing saga of the Crawley family and the servants who work for them.



## Blinded By The Light

In 1987 during the austere days of Thatcher's Britain, teenager Javeed learns to live life, understand his family and find his own voice through the music of Bruce Springsteen.



## Shaun The Sheep: Farmageddon

When an alien with amazing powers crash-lands near Mossy Bottom Farm, Shaun the Sheep goes on a mission.



## Gwen

A folk story set in the dark hills of Wales during the industrial revolution.

## Cinema Experience / Profiad Sinema

Watch the film in a relaxing adult environment, with the bar open beforehand, allowing you to enjoy a tipples of your choice. Under 15's must be accompanied by a responsible adult. (No concessionary prices)

Gwylwch y ffilm mewn amgylchedd ymlaciol i oedolion, gyda'r bar ar agor o flaen llaw, gan ganiatáu i chi fwynhau diod o'ch dewis chi. Rhaid i bobl ifanc dan 15 mlwydd oed fod yng nghwmni oedolion cyfrifol.

## Relaxed Screenings / Ffilmiau Hamddenol

For anyone who might benefit from the subtle alterations made to the auditorium environment. Films are screened with the lights raised slightly, the sound is turned down, with trailers & adverts removed. Customers are welcome to talk and move around the cinema. Usual ticket prices apply.

Delfrydol i unrhyw un fyddai'n elwa o fân newidiadau i amgylchedd yr awditoriwm. Yn ystod y ffilm, bydd yn oleuach, a chaiff y sain ei ddistewi ychydig, ac ni ddangosir hysbysebion a rhagluniau. Mae croeso i gwsmeriaid siarad a symud o gwmpas y sinema. Prisiau tocynnau arferol yn berthnasol.

# Support Us

**The Welfare is a registered charity which relies on support to enable us to keep bringing the best arts and entertainment to the area and ensuring our programme of events is accessible to all. There are many ways you can support your local arts venue...**

## The Little Things:

- Spread the word and tell your friends about us and our events.
- Like us on social media and share our events with others.
- Review us or comment on Facebook, tweet us on twitter or leave feedback at the Box Office.
- Purchase from our bar / sweet shop before events.

## Volunteering:

We have plenty of volunteering opportunities available.

In return for your help and support you'll receive free tickets to events.

## Membership Scheme: Become a Friend of the Hall

Starting from just **£10 a year** you can become a Friend of The Hall. As well as contributing to keeping your Arts and Community Centre central to the community, becoming a Friend will include discounted tickets.

## Donations:

Donations help secure our future.

No matter how big or small, every donation received is gratefully appreciated.

For details on making a donation please contact the Box Office.

## Business Sponsorship:

With over 40,000 customers attending our venue per year and over one hundred visiting companies, we make a huge impact on the number of people visiting Ystradgynlais.

We always encourage "staying local", recommending other local businesses to our audiences and partner organisations.

By sponsoring The Welfare, we can continue to put on great quality shows and events, enticing more people to visit the area.

We can create a sponsorship package to suit any budget, with some great benefits on offer including discounts for you and your staff on tickets, discounted room hire rates and free inclusion in our brochure.

For details on volunteering, our membership scheme and business sponsorship scheme please contact the Box Office.

 01639 843163

 [www.thewelfare.co.uk](http://www.thewelfare.co.uk)

 [boxoffice@thewelfare.co.uk](mailto:boxoffice@thewelfare.co.uk)

Follow us on / Dilynwch ni ar

  [@welfare.ystradgynlais](https://www.instagram.com/welfare.ystradgynlais)

 [@TheWelfare1](https://twitter.com/TheWelfare1)



# Cefnogwch Ni

**Mae'r Neuadd Les yn elusen gofrestrdedig sy'n dibynnu ar gefnogaeth i'n galluogi i barhau i gyflwyno'r celfyddau adloniant gorau i'r ardal cyfagos gan sicrhau fod ein rhaglen o ddigwyddiadau o fewn cyrraedd i bawb. Mae nifer o ffyrdd y gallwch gefnogi eich lleoliad celfyddydol lleol...**

## Y Pethau Bach:

- Lledaenwch y gair a dweud wrth eich ffrindiau amdanom ni a'n digwyddiadau
- Dangoswch eich bod yn ein hoffi ar gyfryngau cymdeithasol a rhannu ein digwyddiadau gydag eraill
- Cyflwynwch adolygiad amdanom ni neu wneud sylwadau amdanom ar Facebook, postio neges ar Trydar neu adael adborth yn y Swyddfa Docynnau.
- Prynwch o'n bar / siop losin cyn digwyddiadau.

## Gwirfoddoli:

Mae gennym ddigonedd o gyfleoedd gwirfoddoli ar gael. Yn gyfnewid am eich help a'ch cefnogaeth, fe fyddwch yn derbyn tocynnau am ddim i ddigwyddiadau.

## Cynllun Aelodaeth: Dod yn Ffrind i'r Neuadd

Yn dechrau o **£10 y flwyddyn** yn unig, gallwch ddod yn Ffrind i'r Neuadd. Ynghyd â chyfrannu i gadw eich Canolfan Gelfyddydol a Chymunedol yn ganolog i'r gymuned, bydd dod yn Ffrind yn cynnwys gostyngiad ar docynnau.

## Rhoddion:

Mae rhoddion yn helpu i sicrhau ein dyfodol. Pa waeth mor fawr neu fach yw'r rhoddion, fe dderbynnir pob rhodd gyda gwerthfawrogiad mawr. Am fanylion ar wneud rhodd, cysylltwch â'r Swyddfa Docynnau.

## Nawdd/Cefnogaeth gan Fusnesau:

Gyda dros 40,000 o gwsmeriaid yn mynychu ein lleoliad pob blwyddyn a dros 100 o gwmnïau yn ymweld, rydym yn cael effaith enfawr ar nifer y bobl sy'n ymweld ag Ystradgynlais.

Rydym bob tro yn annog y syniad o "aros yn lleol", gan argymhell busnesau lleol eraill i'n cynulleidfaoedd a'n sefydliadau partner.

Trwy noddi'r Neuadd Les, gallwn barhau i lwyfannu sioeau a digwyddiadau o ansawdd gwych, gan ddenu mwy o bobl i ymweld â'r ardal. Gallwn greu pecyn noddi i weddu i unrhyw gyllideb, gyda rhai buddiannau gwych ar gynnig gan gynnwys gostyngiadau i chi a'ch staff ar docynnau, gostyngiadau ar gyfraddau llogi ystafelloedd a chael eich cynnwys am ddim yn ein llawlyfr.

Am fanylion ar wirfoddoli, ein cynllun aelodaeth a'n cynllun nawdd gan fusnesau, cysylltwch â'r Swyddfa Docynnau.

 01639 843163

 [www.thewelfare.co.uk](http://www.thewelfare.co.uk)

 [boxoffice@thewelfare.co.uk](mailto:boxoffice@thewelfare.co.uk)

Follow us on / Dilynwch ni ar

  @welfare.ystradgynlais

 @TheWelfare1



## Private Hire Llogi Preifat



Conferences, Training, Weddings  
and Birthdays Cynadleddau,  
Hyfforddi, Priodasau a Phen-blwyddi

**With seven separate spaces offering varying capacities and facilities, The Welfare is the perfect venue for your private event.**

Our versatile auditorium can cater for a range of large scale events, including private parties, meetings & business conferences, awards ceremonies and theatrical shows.

Our other rooms can accommodate smaller groups in layouts that can be adapted to suit your event, be it a one to one interview, a training course or community event.

Wifi, audiovisual equipment and technical facilities are available on request. For special events, weddings or birthday parties, a full decorating service, catering and floral services can be arranged at an additional cost.

**Gyda saith o fannau ar wahân sy'n cynnig meintiau a chyfleusterau amrywiol, y Neuadd Les yw'r lleoliad perfformiad ar gyfer eich digwyddiad preifat.**

Mae ein hawditiwrwm amlbwrpas yn darparu ar gyfer ystod o ddigwyddiadau ar raddfa fawr, gan gynnwys partion preifat, cyfarfodydd a chynadleddau busnes, seremonïau gwobrwyo a sioeau theatrig. Gall ein hystafelloedd eraill ddarparu ar gyfer grwpiau llai mewn cynlluniau a ellir eu haddasu i weddu i'ch digwyddiad, boed os yw'n gyfweiliad un i un, cwrs hyfforddi neu ddigwyddiad cymunedol.

Mae Wifi, offer clywedol-gweledol a chyfleusterau technegol ar gael ar gais. Ar gyfer digwyddiadau arbennig, priodasau neu bartion pen-blwydd, mae gwasanaeth addurno llawn, gwasanaethau arlwygo a blodau yn gallu cael eu trefnu am gost ychwanegol.

## ACCESSIBILITY / MYNEDIAD

The ground floor is fully wheelchair accessible, including toilets. When booking tickets, please mention that you are a wheelchair user so that we can allocate the correct seats. Unfortunately, our first floor meeting room is accessible via a stairwell only.



Mae'r llawr gwaelod o fewn cyrraedd yn llwyr i gadeiriau olwyn, gan gynnwys toiledau. Wrth archebu tocynnau, dywedwch eich bod yn ddefnyddiwr cadair olwyn fel y gallwn ddyrannu'r seddi cywir. Yn anffodus, mae ein hystafell gyfarfod ar y llawr cyntaf o fewn cyrraedd trwy ddringo grisiau yn unig.

Audio induction loop (hearing loop) and audio description equipment are available for cinema screenings. Please ask at the box office.



Mae dolen sain ac offer i roi disgrifiad sain ar gael ar gyfer dangosiadau yn y sinema. Gofynnwch yn y Swyddfa Docynnau os gwelwch yn dda.



We have 4 spaces available for Blue Badge holders. Mae gennym 4 lle ar gael ar gyfer deiliad Bathodyn Glas.



Assistance dogs are welcome at The Welfare, and may sit with you in the auditorium.



Mae croeso i gŵn cymorth yn y Neuadd Les, a gallant eistedd gyda chi yn yr awditiwrwm.

If you would like to familiarise yourself with the building before attending an event please contact the box office to arrange a guided tour. Os hoffech weld yr adeilad cyn dod i ddigwyddiad, mae croeso i chi gysylltu â'r Swyddfa Docynnau i drefnu taith dywys.

Please inform a member of staff if you have any particular requirements and we will be happy to help! Rhowch wybod i staff y swyddfa am unrhyw anghenion arbennig sydd gennych chi a byddwn ni'n falch i'ch helpu.

**A large print or audio brochure is available on request. Mae llyfryn print bras neu lyfryn sain ar gael. Holwch am gopi.**

### hynt

### HYNT Scheme

The Welfare is part of the national access scheme, HYNT, that works with theatres and arts centres in Wales to make sure there is a consistent offer available for visitors with an impairment or specific access requirement, and their Carers or Personal Assistants.

Hynt cardholders are entitled to a 'free admittance' ticket so that their personal assistant or carer can accompany them to any of our events.

For more information, visit [www.hynt.co.uk](http://www.hynt.co.uk)

### Cynllun Hynt

Mae'r Neuadd Les yn rhan o gynllun mynediad cenedlaethol, HYNT, sy'n gweithio gyda theatrau a chanolfannau celfyddydol yng Nghymru i sicrhau fod cynnig cyson ar gael i ymwelwyr sydd â nam neu ofnyion mynediad penodol, a'u Gofalwyr neu Gynorthwyr Personol.

Mae hawl gan ddeiliad cardiau HYNT i gael tocyn 'mynediad am ddim' fel y gall eu cynorthwyr personol neu ofalwyr fynd gyda hwy i unrhyw un o'n digwyddiadau.

Am ragor o wybodaeth, edrychwch ar [www.hynt.co.uk](http://www.hynt.co.uk)

# Directions - How to find us

## From the M4

Leave the M4 Junction 45 and join the A4067 North. Continue on this road for approx 15mins through 7 roundabouts, following signs for Dan-yr-Ogof Caves and Brecon. After the seventh roundabout follow the sign for Ystradgynlais and turn right. Once you reach the mini roundabout turn left and continue into town. Shortly after a zebra crossing The Welfare is situated on the left just past a bus station. You will find ample parking in front of the building.

## From the Heads of the Valley Road A465

Leave the A465 at Glynneath and follow the A4109 towards Abercrave. Continue as it becomes the A4221 and when you reach the T Junction, turn left onto the A4067. After passing Abercrave you will reach two consecutive mini roundabouts, keep left, entering Penrhos. At the bottom of a long hill turn right into The Welfare.

## From Mid Wales / Brecon

Join the A40 and travel west towards Sennybridge. Turn left off the A40 onto A4067 (towards Dan-yr-Ogof). Keep on this road, through Abercrave and follow the directions from above.

## The Welfare SA9 1JJ



# Cyfarwyddiadau - Sut i ddod o hyd i ni

## O'r M4

Gadewch yr M4 gan ddefnyddio cyffordd 45 ac ymunwch â'r A4067 gan deithio i gyfeiriad y Gogledd. Cadwch at yr heol hon am tua 15 munud. Ewch yn syth heibio 7 cylchfan a dilynwch arwyddion Ogofau Dan-yr-Ogof ac Aberhonddu. Ar ôl y saithfed cylchfan, dilynwch yr arwydd i Ystradgynlais a throwch i'r dde. Wrth gyrraedd y cylchfan mini, trowch i'r chwith nes cyrraedd y dre. Ar ôl mynd heibio croesfan cerddwyr sebra gallwch weld y Neuadd Les ar y llaw chwith ar ôl mynd heibio'r garej. Mae digon o le i barcio yn y maes parcio sydd o flaen yr adeilad.

## PARKING / PARCIO

There is limited free parking available for customers of The Welfare. Mae parcio cynfyngedig ar gael am ddim i gwsmeriaid y Neuadd Les yn ein maes parcio.

## O Ffordd Blaenau'r Cymoedd A465

Gadewch yr A465 wrth gyrraedd Glyn-nedd a dilynwch yr A4109 i gyfeiriad Abercrâf. Parhewch i wneud hynny wrth i'r heol newid i'r A4221 ac ar ôl i chi gyrraedd y Gyffordd T, trowch i'r chwith a dilynwch yr A4067. Ar ôl mynd heibio Abercrâf, fe ddewch at ddau gylchfan mini, un ar ôl y llall. Cadwch i'r ochr chwith a chyn bo hir, fe ddewch i Benrhos. Ar waelod y tyle hir, trowch i'r dde i mewn i faes parcio'r Neuadd Les.

## O Ganolbarth Cymru / Aberhonddu

Ymunwch â'r A40 a dilynwch yr heol hon i gyfeiriad y Gorllewin tan i chi gyrraedd Pontsenni. Trowch i'r chwith. Wrth wneud hynny byddwch yn gadael yr A40 ac yn ymuno â'r A4067 (i gyfeiriad Dan-yr-Ogof). Cadwch at yr heol hon ac ewch heibio Abercrâf. Yna dilynwch y cyfarwyddiadau uchod.

## SEPTEMBER

Wednesday 4, Thursday 5  
& Friday 6, 7pm

### Granny Annie

Glantawe Theatre Company

Tuesday 10, 7.30pm

### Margaret Atwood

Live in Cinemas

Thursday 12, 7pm

### Fleabag

NLive

Friday 20, 7pm

### Superstars of Welsh Wrestling

Thursday 26, 7pm

### Cofio Adelina Patti Remembered

Sunday 29, 3pm

### One Man, Two Guvnors

NLive – Encore Screening

## OCTOBER

Wednesday 2, 7.30pm

### peeling

Taking Flight Theatre with  
The Riverfront and Chapter

Friday 4, 8pm

### Gareth Thomas & Friends

Stand Up to Mental Health

Saturday 5, 8pm

### The Ultimate Classic Rock Show

Tuesday 8, 6.45pm

### Don Giovanni

Royal Opera House

Thursday 10, 7pm

### Billy Connolly

The Sex Life of Bandages

Sunday 13, 4pm

### I Wish I Was a Mountain

Presented on tour in Wales  
by Theatr Iolo

Thursday 17, 7pm

### A Midsummer Night's Dream

NLive

Thursday 24, 7.30pm

### Don Pasquale

Royal Opera House

Sunday 27, 4pm

### The Man Who Planted Trees

Puppet State Theatre  
Company

Monday 28, 11am & 3pm

### Ned and the Whale

A Flossy and Boo and RCT  
Theatres Co-Production

## NOVEMBER

Thursday 7, 7pm

### Hansard

NLive

Friday 8, 2pm & 7.30pm

### Tic Toc

Parama 2

Sunday 10, 2pm

### Concerto, Enigma Variations, Raymonda Act III

Royal Opera House

Friday 15, 11am (English)  
& 1.15pm (Welsh)

### The Ugly Duckling

### Yr Hwyaden Fach Hyll

Sherman Theatre

Thursday 21, 7.30pm

### Roots

National Dance  
Company Wales

Thursday 28, 7pm

### Present Laughter

NLive

Friday 29, 8pm

Peatbog Faeries

## DECEMBER

Saturday 7, 7.30pm

### It's a Wonderful Life

Lighthouse Theatre &  
Pontardawe Arts Centre

Sunday 15, 7.30pm

### The West End at Christmas

The West End in Concert

Thursday 19, 7pm

### Well Seasoned

Sunday 22, 2pm

### The Nutcracker

Royal Opera House

## JANUARY

Saturday, 7pm

Sunday 5, 3pm

### Andre Rieu: 70 Years Young

Thurs 23, Fri 24

& Sat 25, 7pm

Sat 25 & Sun 26, 1.30pm

### Peter Pan

Glantawe Theatre Company

To book tickets call the Box Office on  
**01639 843163**

Outside Box Office hours reserve your  
tickets by emailing us on  
**boxoffice@thewelfare.co.uk**  
or by leaving a phone message.

**Box Office opening hours:** Monday to Friday 9am - 3pm  
For full details visit our website at **www.thewelfare.co.uk**

### Oriau agor y Swyddfa Docynnau:

Dydd Llun i Ddydd Gwener 9yb - 3yh

Manylion llawn ar ein gwefan **www.thewelfare.co.uk**

All details correct at time of going to press.  
We reserve the right to change the programme  
due to circumstances beyond our control.

Mae'r holl fanylion yn gywir ar yr adeg pan fo'r  
rhaglen yn mynd i'r wasg. Rydym yn cadw'r hawl i  
newid y rhaglen oherwydd amgylchiadau y tu hwnt  
i'n rheolaeth.

Registered Charity Number: 1054054